

Partners in Community Development Fiji

Working to empower communities by assisting them to make informed decisions for their future development.

RA KAKA NEWSLETTER



April 2011

Issue 4/11

IN THIS ISSUE

- [1] Play your part in developing Fiji's future leaders - Book Drive
- [2] Launch of Facebook Page
- [3] Patience is a virtue - the story of Waisa
- [4] New project site Cicia Island
- [5] Successful Business Training in Vanua Levu
- [5] Batiki Forest Inventory

Play your part in developing Fiji's future leaders by donating your old books for a good cause

Suva, Fiji – A book donation drive has been launched in aid of five community schools of Cicia island in Lau. The initiative was started by PCDF in affiliation with the Young Professionals (YPs) Club of YWCA Fiji.

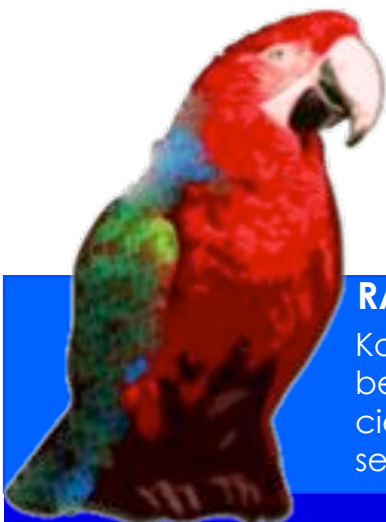


School students of Mabula Primary School, Cicia Island

Five village schools and kindergartens in Cicia island need your support to improve the education of their children. Currently, as many as 157 high school children have to share a very limited number of textbooks, making everyday learning and gaining a full education a constant struggle.

The villages are in need of library books, reference and story books, vocational training literature or textbooks for Fiji's education curriculum and educational toys to provide effective education for the children of Cicia.

So, instead of throwing away your unwanted books or keep them lying around in a corner, donate to us and support this worthy cause! Donations can be made by contacting Eta Kedrayate on Tel.: 8688171 or kedrayate.eta@gmail.com or at our Suva collection point at the Downtown Boulevard on Ellery Street.



RA KAKA

Kaka is Kadavu for parrot. Kadavu Province is the home of the beautiful shining parrot, 'prosopeia splendens', an endemic species. The Kaka is a messenger not only on land but also on sea - it serves as a communicator for God's living creatures.

Finance and Admin update

- On-going Admin and Finance work for the month of April
- Facilitating Project Reports, acquittals and Audit reports for donors
- PCDF is having on-going meetings with Donors on new projects
- Staff is mindful of the Health Promoting Policy, Child Policy, Gender Policy, and Environmental Policy in the work place.

MEDIA UPDATE

PCDF launches Facebook Page

A new Facebook page has been set up, to keep our friends, partners and stakeholders up-to-date with recent projects, events and activities.

The page is accessible to view by anyone, even non-Facebook-users. We post regular news updates and photos from the field to

keep you informed about our everyday work. We are also sharing links to international news and articles relating to our area of work.

Come and join! Visit us at www.facebook.com/pcdfiji and click the "Like" button to follow us. If you like what you see, please take the time to suggest our page to your friends who might be interested in our work at PCDF.



Office space to let

As of June 1st, our rental property on 8 Denison Road is available to let for only \$500 FD per month.

Rent includes electricity and water. The office consists of one room that can accommodate up to five people, a kitchen area and a bathroom.

Internet and Telephone line are not included in the price, however it is possible to use PCDF's Printer, Fax machine and Photocopier at a small extra charge.

The rental agreement will initially cover six months, after which a renewal will be up for discussion.

If you are interested in renting our office space, please contact Annie Madden on: 330 0392 or email: amadden@pcdf.org.fj



MORDI STORY

Patience is a Virtue - the story of development in Waisa

By Talica Anderson

The sun rises every morning and sets in the afternoon, days come and days go, time is ticking by and we hardly notice when it passes.

The village of Waisa in Kubulau, located in the interior of Vanua Levu, lies detached from basic health and government services and is not accessible by transport. The community was established in 1900 and registered in the 1940's during a time of colonies and wars. The people of Waisa have been struggling with the hardships of every day life ever since.

Back in the twentieth century, the people of Waisa depended on bore holes, rivers and dams as a water source for drinking, washing and cooking. Subsequently, the standards of hygiene, sanitation and living in those years were very low and the health of the villagers suffered.

Developments were slow in Waisa but in 2011 a dream finally came true and the community received five flush toilets and water tanks from the government - their patience had paid off. Now, there are 16 households and a total number of 53 villagers living in the community, all of which want to take development to the next level.

PCDF has been able to extend a helping hand, as Waisa has been lacking basic infrastructural developments and is struggling with expenditure and technical ideas to move forward.



Maria Senikarawa (left), village head Turaga Ni Koro (centre) and Women's Club leader Maria Bola (right) taking a break during PCDF's workshop in Waisa.

The Mainstreaming of Rural Development Innovation (MORDI) programme frequently conduct Capacity Building training and workshops to the district of Kubulau that the people of Waisa have attended. The workshops have strengthened the knowledge of the basic principles of development.

This year, MORDI conducted two separate workshops in the community of Waisa. The villagers were blissful; looking forward to meet the experts who had travelled a long way from Suva to discuss their concerns and ambitions.

"This was the first workshop conducted in Waisa ever since I arrived here more than fifteen years ago", villager Maria Senikarawa says. "We were happy to host these two workshops in our village because there are so many things that we need", she added. "We were planning to have a footpath installed as our first priority this year which will ease the means of transportation and also beautify our village".

"In a way life in the community was easier back then ", says vil-

"This was the first workshop conducted in Waisa in over fifteen years. We are so happy to host the sessions, because there are so many things that we need."

lage leader Aporosa Soqomai-wasa. "Our forefathers were hard workers, they managed to build our village church and everything else we have in the village. Today, the prices of materials and cost of transport are so much more expensive."

Patience is a virtue; developments will slowly come to Waisa, if we have a heart of patience. Needs will be solved through the team work of communities, governments, NGO's, the private sector and companies, to better our communities and benefit our children and the generations to follow.

NRM NEWS

Cicia island identified as new project site

By Matilita Kedrayate

In the on-going effort to develop village resources and help communities sustain their livelihoods, the 'Community Based protection of Coral Reefs' project has expanded its reach to include Cicia Island in the Lau Province. The Natural Resource Management (NRM) Team, together with PCDF's Executive Director Tevita Ravu-maidama, conducted its first preliminary visit to the five communities of Cicia from 5th-19th April, to introduce the focus of the project.

The two week trip involved presentations and informal interactive discussions with village elders, women and youth groups, the school management committees and teachers. There are 5 villages on Cicia – Tarukua, Lomati, Natokalau, Naceva and Mabula with a total population of 1,118.

The project focuses primarily on the conservation and sustainable management of marine and land resources. However, open discussions allowed community members to voice other concerns and plans for their villages, and together they compiled development plans that focused on the four categories of health, environment, income generation and village development.

After discussions with the village teachers and school committees, plans to counter current challenges were drafted and a book donation drive was launched in aid of village education.

The communities' biggest struggles include access to safe drink-



Top: A view of Mabula village, the biggest village in Cicia with a total population of 398.

Bottom: Women of Naceva village after a village ground inspection to identify areas that need attention

ing water, markets for their produce and the development of local resources for income generating projects. The impacts of climate change have also generated problems: Increasing wave surges are eroding much of the shoreline, which has increased the vulnerability to tsunamis.

Last year, three cyclone evacuations took place and many houses were destroyed. With no evacuation centre on the island, this meant that the villagers had to climb a steep mountain to escape the danger. As the walk proves too difficult for the elders, many decided to remain in the village

without their families and in spite of the inherent danger.

Last year, three cyclone evacuations took place and many houses were destroyed.

The project will hold discussions with its network partners to work at addressing these concerns while also looking at community empowerment and capacity building to enable Cicia's villages to take ownership of their development.

MORDI facilitators shine at recent Business and Management Training

From 11th-15th April, nineteen villagers from Nayarailagi, Vanua Levu, successfully completed a five day Business and Management Training course that helped them establish complete Business Plans and Budgets to succeed in their entrepreneurial ventures.

The training was funded by PCDF and PCP (Pacific Centre for Peacebuilding) and facilitated by the Centre for Appropriate Technological Development (CATD).

Apart from business and management, topics such as Leadership, Conflict Resolution and Communication concepts were thoroughly taught to the 15 male and 4 female participants at Nayarailagi village, Macuata.

PCDF (MORDI) trained District Facilitators, William Driver and Samu Qolikoro also took part in



The successful participants with their workshop certificates

the training, as national representatives of MORDI communities. This was another opportunity for PCDF trainees to share their ideas and lessons learnt with other training participants.

At the end of the week, participants had successfully established a full Business Plan and presented their ideas and budget strategies to the others. "The

business proposals were very well presented, which shows that the content of the course was appropriate and helpful", said trainer Mere Tunabuna.

PCDF runs Business and Management training across Fiji. The sessions have led to the creation of a number successful businesses; providing a stepping-stone to entrepreneurial development in Fiji.

Batiki Forest Inventory

By Watisoni Sokiveta

A Forest Inventory for Batiki island was conducted from the 11th to the 30th of April, to determine the volume of the various tree species and investigate opportunities for income-generation.

PCDF's Natural Resource Management (NRM) team put special focus on Dilo trees (*Calophyllum inophyllum*), as there is a great abundance. The inventory also enabled the district to designate protected areas for their water sources and native forests and identify newly introduced tree species like the Vaivai ni Valagi or Raintree (*Samanea saman*) that can be processed to timber for local and commercial use.



NRM Project Officer Watisoni Sokiveta (left) and team during the Forest Inventory in Batiki

Last year, PCDF also helped to impose a total ban on 'slash and burn agriculture', that was widely practiced in the district.

During the forest inventory the communities reflected on the work done so far. Taione Lave, a consultant hired to conduct the inventory stated that communities are feeling a return to

the cooler climate that was once provided by the forests, as well as the re-growth of a lot of the island's vegetation and greenery.

Batiki was thankful to PCDF and its network partners for encouraging the policy, as the protection of the island's resources is vital for their future.



PARTNERS IN COMMUNITY DEVELOPMENT FIJI

8 Denison Road PO Box 14447, Suva, Fiji.

Phone: (679) 330 0392/(679) 3314 160

Fax: (679) 3304 315

Email: admin@pcdf.org.fj

www.pcdf.org.fj

www.facebook.com/pcdfiji



Passionate about Community Development?

We are currently looking for motivated individuals to join us as members of PCDF.

A sincere interest in community development is a must.

If you are interested in becoming a member, please write to the Executive Director at our Suva office on 8 Denison Road or email admin@pcdf.org.fj.

Join us and support our important work with an **annual membership fee of only \$20.00.**

Previous members are also encouraged to apply.

The PCDF Team

Key contacts

Press/Ra KaKa Editor & Layout.....Alexandra Schiffmann
Finance & Administration.....Annie Madden
Graphic Art.....Filipe Waqairagata
MORDI.....Iliapi Tuwai
Natural Resource Management.....Matilita Kedrayate

Ferine Bano, Sereana Rakai, Feke Serau, Ilisapeci Whippy, Tiriseyani Naulivou, Watisoni Sokiveta, Ilisoni Tuinasavusavu, Talica Anderson, Setefano Nauqe, Seruwaia Hoyte, Susana Lewanituva, Moala Volau, Marika Tuvasu, Solomone Bolenaivalu

Patron: Archbishop Petero Mataka

Trustees: Verona Lucas, Adi Laufitu Malani, Susana Tuisawau

Board of Directors:

Sashi Singh (Chairperson), Lionel Gibson, Rajeshwar Singh, Laitia Tamata, Tevita Ravumaidama (Executive Director).

Donors

PCDF humbly salutes the following organisations, without whom we could not complete any of our important work:

AUSAID, NZAID, IFAD, FSPI, EED, Rotary Water for Life, Shangri-La's Fijian Resort, Canada Fund

TRAINING AND MEETING VENUE FOR HIRE

Located only footsteps from town, on Denison Road, the **Vunimaqo Deck** is the ideal training and meeting venue. It can accommodate up to **50 delegates**, equipment for meeting and catering are available upon request. For more information please **contact** the **Office Manager** on Tel.: 330 0392, or send an email to: **admin@pcdf.org.fj**

