

SHARING STORIES

Unaisi Tarabite
Community Resource Person
-Traditional Moturiki Mats
Nasesara



"... This was the first sighting of our traditional mat by most Moturiki women. The young women are very enthusiastic about this and have embraced the traditional craft we were once renowned for. We're grateful to PCDF and Department of Culture and Heritage for the revival of our traditional craft. We're now earning money from selling the jewelry and baskets we learnt to make. We sell to tourists at the workshop in nearby resorts and relatives in towns. There is potential to keep selling our handicrafts, we're thankful to PCDF for bringing this workshop to us, and helping to secure markets for our work..."
08.10.09



INTERNATIONAL MEDIA COVERAGE

- * 2008 ABC – Sustainable Tourism
- * 2008 BBC Television – The Coral Gardner
- * 2004 BBC Radio – Coral Gardens
- * 2003 BBC Television – Coral Gardens

AWARDS

- * First Runner Up for Annual Report 2007, by the South Pacific Stock Exchange
- * First Runner Up for Annual Report 2006, by the South Pacific Stock Exchange
- * International Green Apple Award (Soil Conservation) Winner 2006
- * Gold for International Green Apple Award (Environmental Best Practice) 2004
- * Best Annual Report 2004, South Pacific Stock Exchange



DONOR SUPPORT

- * People & Policy - NZAID via FSPI
- * Youth & Mental Health - NZAID via FSPI
- * Just Water - European Union
- * Just Water - UNICEF
- * MORDI - IFAD via FSPI
- * Community Based Protection of Coral Reefs - EED
- * Healthy Reefs - AUSAID
- * Corals for Conservation - Canada Fund
- * Cuvu Community Environmental Initiative - Shangri-La
- * Maiwai Water Awareness and Management - Rotary Water for Life Foundation
- * Admin Core Funding - AUSAID



PLEASE HELP US...

- * Conserve our fresh water
- * Promote good governance
- * Reduce the stigma attached to mental health issues
- * Support sustainable livelihood initiatives
- * Protect our coral reefs

Please contact us to make a donation



PARTNERS IN COMMUNITY DEVELOPMENT FIJI
8 Denison Road, P. O Box 14447, Suva, Fiji Islands.
Ph: (679) 3300 392/ 3314 160; Fax: (679) 3304 315
Email: admin@pcdf.org.fj

PCDF was founded in 1978 by the
Foundation for the People of the South Pacific (FSP Fiji).
It was registered under Fiji's charitable Trust Act (CAP67) in 1970.



www.pcdfiji.org

Working in partnership with communities
to empower and assist with informed decision
making for their own future development



We believe Fiji is full of promise... PCDF holds a 30 year legacy of providing valuable lessons, guidance and most importantly, inspiration for the future. We aim to assist the people of Fiji in all aspects of development; environmental, infrastructural, governmental and social.

PCDF, one of Fiji's longest established development NGOs, was founded in 1978. We have very targeted goals. These are vitally important programs. It is our commitment to take these programs and run them with efficiency. Depending on funding, our projects change frequently.

OUR PROJECTS

Maiwai – Water Awareness and Management

Awareness training workshops to help generate Water Management Plans and Water Monitoring Committees.

MORDI (Mainstreaming of Rural Development Innovations)

Contributing to sustainable, improved livelihoods of vulnerable communities living in remote rural areas of the Pacific Island Countries.

Cakaubulabula (Living Reefs)

Supporting the conservation and sustainable management of marine and coastal resources in the areas most utilised and impacted by the tourism and coral-reef based industries.

Community Based Protection of Coral Reefs and Healthy Reefs

Addressing root causes of marine degradation and rural poverty by supporting sustainable livelihood initiatives as incentives to conservation.

Corals for Conservation

Developing certification standards, a monitoring process and a governance structure to ensure that coral grown for sale can be confirmed as farmed and not wild.

Cuvu Community Environmental Initiative

Applying permanent solutions to long-standing environmental, socio-political and cultural problems which negatively impact tourism at Shangri-La Fijian Resort.



Just Water I

Provided a reliable water supply system in 12 rural schools identified by the Ministry of Education.

Just Water II

Provided emergency assistance and supported early recovery and rehabilitation in the water and sanitation sector in schools and communities. Seven schools and 10 communities benefited and a total of 3,859 people, including 1,219 students, now access safe drinking water through rainwater harvesting tanks.

Capacity Building for Rural Education

Aided capacity building for rural-based leaders in education.

Good Governance People and Policy

Promoted good governance and developments for sustainable livelihoods in communities throughout Fiji.

Youth and Mental Health

Increased the awareness of and reduced the stigma attached to mental health issues in Fiji.

GOALS

- Conserve our fresh water
- Promote good governance
- Reduce the stigma attached to mental health issues
- Support sustainable livelihood initiatives
- Protect our coral reefs

HOW WE WORK

- We are a team of 30 Fijians, Multi Ethnic, European and Australasian's.
- We are informed about a project either directly or indirectly from a community. But the official written request must eventually come from the communities themselves.
- We will work with a community if no other organisation is currently doing so.
- We assess the project logistics and write up a proposal.
- We work closely both with the government and independently to achieve objectives.
- We use community appropriate tools of engagement.

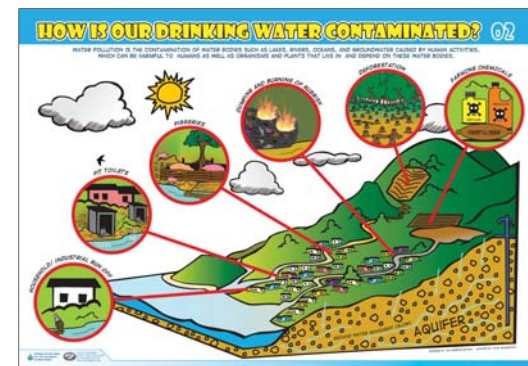


Women holding their mat after a PCDF workshop

Since 2007 PCDF has facilitated the establishment of 57 Marine Protected (tabu) Areas in Fiji



Since 2007 PCDF has helped 142 communities develop Management Plans



School poster designed by PCDF